

# BSAFE

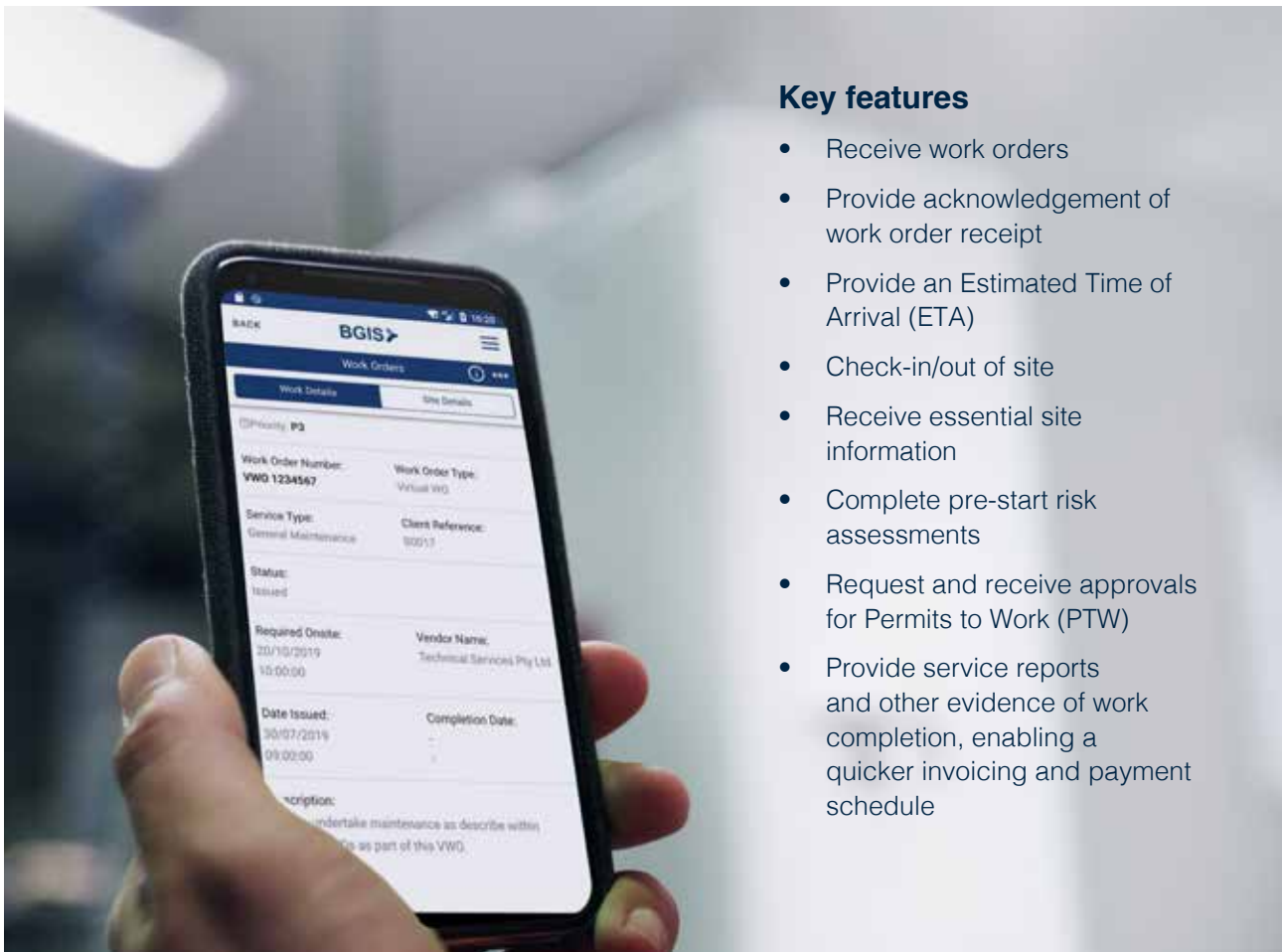
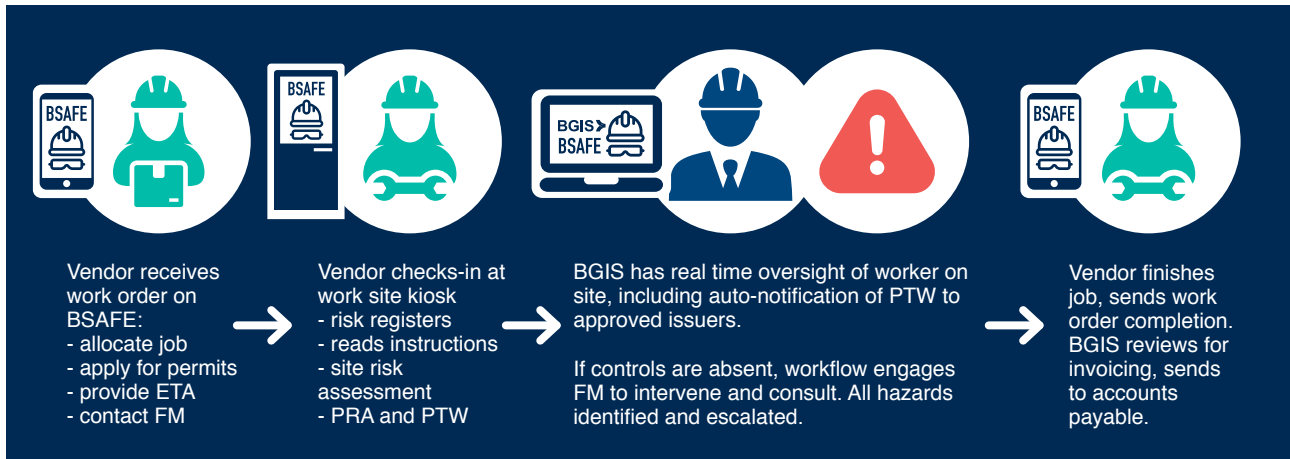
BGIS SAFETY ASSURANCE &  
FIELD EXCELLENCE PLATFORM



# BSAFE is a revolution in safety compliance

BSAFE is the BGIS Safety Assurance & Field Excellence platform for real-time compliance validation, site access control, safety and job closures. It replaces many isolated administrative tasks and paper forms, bringing it all together in an integrated mobile solution.

## BSAFE in action



### Key features

- Receive work orders
- Provide acknowledgement of work order receipt
- Provide an Estimated Time of Arrival (ETA)
- Check-in/out of site
- Receive essential site information
- Complete pre-start risk assessments
- Request and receive approvals for Permits to Work (PTW)
- Provide service reports and other evidence of work completion, enabling a quicker invoicing and payment schedule

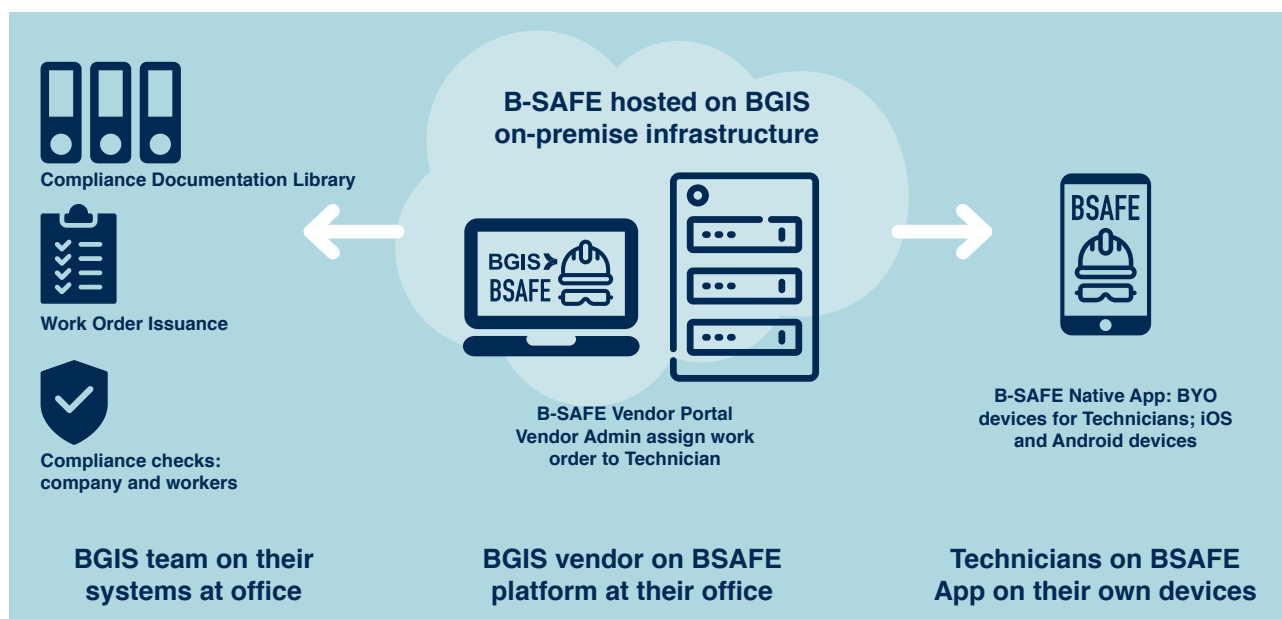
## Real-time oversight of every person on every site

Traditionally, workplace safety systems have been paper-based and reliant on isolated administrative tasks. Combined with sub-contracting (sometimes multiple layers down), this lack of visibility and integration has increased risks in the workplace.

At BGIS, we saw this as an opportunity to design a real-time, technology-driven solution, which is how we developed BSAFE – or BGIS Safety Assurance and Field Excellence.

BSAFE allows us to manage any worker at any location and their work orders, proof of presence, live permit approvals, access control, induction and qualification validation. Essentially, BSAFE is a virtual window into who's doing what, where, when and how.

## BSAFE technology platform



BSAFE is tailored to our partners and easily accessed via onsite kiosks or mobile devices.

## With BSAFE, we increase safety, eliminate bureaucracy and provide complete transparency to our clients.

BGIS understands safety is a core part of business and gives our clients the power to make safety a core part of theirs.

For too long, clients haven't been provided clear oversight of the work done on their properties.

Through this platform, our clients receive timely, critical insights to ensure risks are addressed and can trigger different standards, checks and workflows, providing greater flexibility and transparency.

The BGIS logo features the letters 'BGIS' in a bold, white, sans-serif font. To the right of the letters is a white graphic element consisting of a stylized arrow or 'Y' shape pointing to the right.The 'SAFER TOGETHER' logo consists of the words 'SAFER TOGETHER' in a white, sans-serif font. The text is centered within a white rectangular box that has diagonal hatching or a striped pattern on its top and bottom edges.

### **About BGIS**

BGIS is a leading provider of facility management services, project delivery services, energy and sustainability solutions, building performance management, workplace advisory and management, real estate services and trades services.

Our talented team of over 10,000 people operates across offices in Canada, United States of America, Australia, Asia and New Zealand. Our clients are from a diverse range of sectors, including defence, justice, government, education, healthcare, utilities, finance, telecommunications, property, resources, oil & gas and sport & leisure. We manage over 50,000 client locations totaling more than 50 million square metres in a portfolio of corporate offices, retail, universities, schools, hospitals, venues & stadiums, institutions, bases, remote townships, warehouses, industrial assets and data centres.

### **Head office**

Level 36, World Square  
680 George Street, Sydney NSW 2000

### **Asia Pacific offices**

Adelaide | Brisbane | Canberra | Melbourne | Perth | Sydney | Auckland | Wellington

T: 1800 351 235

E: [enquiries@apac.bgis.com](mailto:enquiries@apac.bgis.com)

B392-022024